

2020 | Prospectus



**Talent
International
Institute**

Disclaimer

The information contained in this Prospectus is correct at the time of publishing. TII (Talent International Institute) reserves the right to cancel or postpone any of the programmes and shall not be liable for any claim other than the proportion of programme fees which the cancelled portion bears. Some programmes may be dependent upon formal approval from NZQA, Tertiary Education Commission funding allocation, and the number of enrolments. As part of the New Zealand Qualifications Authority (NZQA) targeted review of all Level 1-6 New Zealand qualifications, there may still be changes to some programmes starting in 2021.

Fees, programmes, entry and selection criteria, and dates, are subject to change. Please check the relevant programme pages at www.tii.ac.nz and www.tiiexperience.com for up-to-date information and full entry regulations before applying to enrol.

CONTENTS

Welcome to TII

- 04 Message from Principal
- 05 About TII

Academic Programmes

- 07 English Programme (ESOL)
- 09 Online English Programme
- 12 Pre-purchased English Language Tuition (PELT)
- 13 New Zealand Certificate in English language (NZCEL)
- 15 Placement at TII

Pastoral Care and other information

- 16 Pastoral care
- 17 Fee Protection Policy
- 18 Student Visa Information
- 19 Health & Travel Insurance

Non - Academic Programmes

- 20 School Holiday Programme
- 23 Afterschool Programme
- 25 Business Chinese Language Programme

Live in New Zealand

- 26 Live in New Zealand
- 28 Culture Shock
- 28 Healthcare
- 29 Accommodation
- 30 Banking
- 33 Transport
- 32 Cell Phones
- 32 Shopping
- 30 Fun and Recreation
- 35 Next Steps



Message from Principal

Dear Students,

At Talent International Institute, we are committed to delivering our best to our students. We consider our students as an integral stakeholder and provide a range of programmes to enhance your employability in the New Zealand market. We are fortunate to have a highly professional, qualified and experienced team to help our students to successfully navigate throughout the academic journey.

To support our international students, we have a culture of respect and inclusivity to different cultures and nationalities. We understand the needs of international students, and we aim to provide all the essential services - student support, academic support and employment support.

Welcome to Talent International Institute.

Qaiser Rashid
Principal / CEO



About Talent International Institute



We are a Private Training Establishment (PTE), Ever since 2003, Talent International Institute, abbreviated as TII, has established a reputation for excellent in the field of English language teaching and we are sure that you will be a part of that continuing success.

The policy of TII fulfils the requirements of the New Zealand Qualifications Authority and the Code of Practice for the Pastoral Care of International Students.

Our school sites, located in the hearts of Christchurch and Dunedin, provide a welcoming atmosphere for students from all around the world. The school has classrooms with latest technology, an administration office, staff room, wireless computer access facilities, student common room with kitchen, and free Wi-Fi throughout the building.

The teaching staff is an enthusiastic group who have high professional standards, having been chosen for their ability and interest in the philosophy of Talent International Institute. We expect students to perform to their highest potential and regard pastoral care as an important aspect of our jobs. Well qualified and experienced lectures are assisted by talented, hardworking support staff.

Talent International Institute has guidance/care procedures designed to assist students, both academically and socially, since the classroom is only one part of the life of a Talent International Institute student.

Our courses range consist of English Programme, New Zealand Certificate in English Language (NZCEL) Programme and multiple school holiday programmes. We currently offer English Language courses suited to students of all skill levels and NZCEL with an aim to increase our programme range in future.





THE CHRISTCHURCH CAMPUS

TII Christchurch Campus is adjacent to the Avon River which meanders through Christchurch city, located in the heart of the CBD area. It is within walking distance to the Christchurch Library, Bus Interchange, a large shopping complex and supermarkets, movie theatres, restaurants, cafes and other conveniences. Students are encouraged to explore the Christchurch CBD as it rebuilds itself to be a modern city that acknowledges its history.



THE DUNEDIN CAMPUS

Located within a 10 minute walk from both Otago University and Otago Polytechnic campuses and across the street from the Otago Medical School and Dunedin Public Hospital. TII is one block from Dunedin's largest shopping complex and is close to supermarkets, restaurants, cafes and bus routes. Our campus really does lie at the heart of the city!

English Programme



TII teaches general English language courses from Beginner level through to Advanced (depending on numbers) and IELTS.

The goals and content of the courses differ for each level and for each group of students. Because our classes are small, there will be many opportunities to discuss the classes with your teacher. Your needs will be discussed and reviewed, if necessary, on a regular basis.

- **Face to Face OR Onshore/Offshore Online Available**

We offer not only face to face delivery but also online delivery.

Learning online is different from being in a regular classroom. There are benefits like being able to work at your own pace at a time that suits you but also challenges as well. Throughout your learning journey we are on your team and will make your experience as smooth as possible.

Be positive and outgoing when you interact with the teachers and other students when you are attending your classes. True learning is as much about giving as receiving.

Together, Talent International and you will set new horizons!



- **Teaching and Learning**

Some teaching methods may be different from those in your country. Our teachers are well qualified and very experienced and will help you to feel comfortable in the class. Sometimes you will listen to the teacher, sometimes you will work by yourself and sometimes you will work with another student, in a small group or with the whole class. It is important to be enthusiastic and to participate. Be prepared to ask and answer questions.

- **Testing**

Testing is another way of learning. It is an opportunity for you to find out what is correct. It is also a way of checking that you are making progress and that what we teach is useful to you.

There are also ways you can test yourself. Your teacher will give you regular tests, usually every six weeks, and will give you the results of these tests the following day. Your teacher will also give you information and advice on how to best improve your English. You will receive this advice on a written report as well as in regular conversations with your teacher.

- **Course Evaluation**

You will be asked to complete course evaluations at the end of your first week, every 6 weeks in class, and at the end of the course.

You may also place informal concerns or suggestions for review in the Suggestion Box at the reception desk.

Beginner / Elementary

The Beginner level introduces students who have little or no knowledge of English to the alphabet, the English sound/spelling system and basic communication strategies. Entry to the Elementary level requires that students have a basic knowledge of commonly used English words.

Pre-Intermediate / Intermediate

Pre-Intermediate to Intermediate levels is for students who can communicate in written and spoken English.

Upper Intermediate / Advanced

Upper Intermediate to Advanced levels are for students who are more fluent in English and wish to improve their reading, writing, listening and speaking skills.

Focus on IELTS (Academic and General)

General IELTS is suited to Intermediate and above students wishing to gain residency or entrance to some tertiary courses. Academic IELTS is designed for Upper Intermediate/Advanced students wishing to gain entrance into university or polytechnic. The offering of the Focus on IELTS afternoon class is dependent upon demand.

The aim of the Focus on IELTS Class is to help students achieve a level of listening, reading, writing and speaking, so that they will be adequately prepared to take the external IELTS exam at the local IELTS Testing Centre and hopefully be eligible to study further tertiary level courses in New Zealand, Australia or other institutions around the world. Students may also need an IELTS score for their visa application. Students need to check with their course provider or immigration advisor about their requirements.



As a general rule, it is recommended that someone has studied General English to higher Intermediate level prior to studying for Academic IELTS, if university study is the goal.



Online English Programme

The Online English language training programmes are aimed at providing quality English language tuition to offshore/onshore foreign students at all levels of ability.

TII fulfils the requirements of the New Zealand Qualifications Authority and the TII Offshore Online Delivery Code of Practice for Offshore Students.

Online Assessment at TII

Placement test: Consists of 3 parts -- oral (by zoom interview), writing and grammar to determine the level of the student.

Weekly formative assessments: Each week the class teacher reviews the work learnt and may give students informal mini tests.

4 weekly Progress tests: Every 4 weeks students will be given a progress test and a report.

Final test: All students studying to 4 weeks or longer will be given an exit test to measure their overall progress.

Entry Enquirements

The minimum entry age for students is 13 years old.

There are no other specific entry requirements. All students' English language competency is assessed upon enrolment and the students are then placed in a class at the appropriate level.

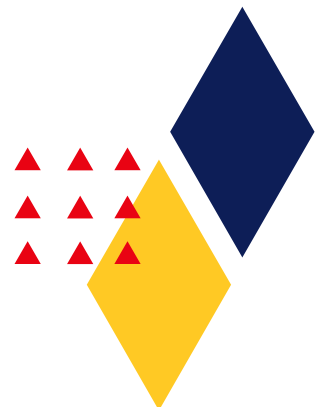
Beginner to Advanced

The general English programme is comprised of Levels 1-4

- English - Beginner/Elementary (Level 1)
- English - Pre Intermediate/Intermediate (level 2)
- English - Upper Intermediate/Advanced (level 3- 4)
- Certificate in Academic Critical Discourses (Level 4)

The course runs for 25 hours each week.

Covering the units in a course book takes 12 weeks. Students decide their length of study and it is expected that the average student requires approximately 12 weeks to complete a level. However, allowances are made for individual learning abilities, and it is therefore possible to progress to a higher level within the 12 weeks. The modular nature of the programme is designed so that students may study for shorter periods of time. They may also choose to study on either a part-time or full-time basis.





TII emphasises the individual student.

Individual date of student entry

Students may start school on any Monday of the school year depending on individual circumstances. In the case of some students, this flexibility is essential as exact dates of arrival cannot always be given or adhered to. It is also very convenient for students who are taking short courses.

Individual rate of progress

Some students advance more quickly than others, depending on many factors. Some of these include:

- natural linguistic aptitude
- degree of application
- motivation and reasons for studying
- previous English study before coming to New Zealand
- length of time which has elapsed since last studying English
- ability to adapt to a different culture
- personality factors
- their first language
- age

The “individual study” system caters best for the individual objectives of each student. Students who enrol at our school have a wide diversity of reasons for learning English. Our flexible system is able to fulfil widely differing student objectives.

Individual length of stay

Students may study for any length of time from a minimum of one week onwards. This flexibility again suits individual circumstances and finances.

Small Classes

We encourage a maximum of ten students per class but realise that flexibility of classroom number is required depending on human resources. A 10-student classroom represents the ideal English language classroom size. This allows for greater individual attention than does a large class. Without a small class, it would be very difficult, if not impossible, to give each student enough individual attention to enable the “continuous study” system to work.

*For more information, please send an email to info@tii.ac.nz
or check the contact details on the last page of this prospectus*



PELT

We offer Pre-purchased English Language Tuition (PELT) for migrants who have paid money for their Tuition to Immigration at the time of their visa application, before they arrived in NZ. This course is Migrant-Focused, and these students will improve their English in order to be able to settle into New Zealand life and work.

New Zealand Certificate in English Language (Applied) (Level 3)

Duration: 19 weeks

Intake date: 15th February, 2021

Study Options: Full Time

Location: Christchurch Campus

Aim

The aim of this programme is to enable learners' language development within an academic context. Learners will develop their receptive and productive language skills based on the four modules - speaking, reading, listening and writing. They will be able to display a working knowledge of intermediate English grammar, communicate with some confidence in a variety of situations, display a working knowledge of English vocabulary with allowable errors, clearly write basic texts on familiar topics and apply intermediate reading skills. It is suitable for learners who already have a basic grasp (B1 of the CEFR) of the language. The course provides a pathway for enrolment into the NZCEL Level 4 (Academic) programme.

Content

The Programme consists of 4 modules at Level 3:

- * Reading with 16 credits
- * Writing with 16 credits
- * Speaking with 15 credits
- * Listening with 15 credits

Outcomes

On completion of this programme, graduates will be able to demonstrate the following outcomes:

1. Learners are able to comprehend the overall meaning, main ideas, supporting details and specific requirements of familiar oral academic texts - 13 credits
2. Learners demonstrate control of a range of linguistic features with clear and comprehensible pronunciation when speaking within a familiar academic context - 13 credits
3. Learners are able to understand main ideas, supporting details and overall meaning of moderately complex familiar written academic texts- 14 credits
4. Learners are able to write accurate simple, compound and complex sentences using high-frequency vocabulary and terms relevant to familiar topics in the academic context- 14 credits
5. Learners display an awareness of language errors in themselves and access resources to assist them to correct these errors-8 credits

Programme Entry Criteria

- * Minimum age of 16 years
- * Completion of Level 3 NZCEL (General) OR
- * An overall IELTS proficiency level in Academic English of 5.0 OR
- * An acceptable score from an NZQA approved International English Language Testing System OR
- * Pass TII internal placement test.

New Zealand Certificate in English Language (Academic) (Level 4)

Duration: 19 weeks
Intake date: 15th February, 2021
Study Options: Full Time
Location: Christchurch Campus

Aim

The aim of this programme is to enable learners' language development, with a focus on study skills and specific tasks which are relevant to the academic context. Learners will acquire language skills while at the same time developing knowledge, attitudes and skills such as investigation, reflection, discussion, interpretation, and cooperation. The course builds on from the NZCEL Level 3 (Applied- Academic) programme. Learners will develop their receptive and productive language skills based on four modules - speaking, reading, listening and writing. These modular components are based on internationally accepted standards, CEFR- B2 mid-level. Learners will be able to meet the English language requirements for qualifications at levels 6-7, or pathway into the NZCEL Level 5 qualification.

Content

The Programme consists of 4 modules at Level 4:

- * Reading with 16 credits
- * Writing with 16 credits
- * Speaking with 15 credits
- * Listening with 15 credits

Outcomes

On completion of this programme, graduates will be able to demonstrate the following outcomes:

1. Learners are able to understand straightforward verbal academic information, identifying both general messages and specific details as required- 13 credits
2. Learners utilise a sufficient range of language to give clear descriptions and express viewpoints on topics when speaking within an academic context - 13 credits
3. Learners are able to read with some degree of independence, adapting style and speed of reading to different academic texts - 14 credits
4. Learners are able to convey information and ideas on abstract as well as concrete topics and ask about or explain problems with reasonable precision, in writing - 14 credits
5. Learners display an awareness of language errors in themselves and access resources to assist them to correct these errors - 8 credits

Programme Entry Criteria

- * Minimum age of 16 years
- * Completion of Level 3 NZCEL OR
- * An overall IELTS proficiency level in Academic English of 5.5 OR
- * An acceptable score from an NZQA approved International English Language Testing System OR
- * Pass TII internal placement test.

Placement at TII (English Programme)

Class sizes are kept to a maximum of 10 students (unless part of an organised group)

Initial Placement

On their first day at school students take a Placement Test in Grammar, Writing and Speaking. The Test results are discussed, and a level placement made by the Head Teacher.

The Student joins the suggested class. The teachers give feedback on the placement and changes may be made for the next day of study if necessary.



Class Movement

Normally, class promotions are recommended after the 6-weekly Progress Test. Generally, students should attain around 80% and should also be deemed ready by the teacher. Repeating students with particular “sticking” issues may sometimes be promoted without attaining 80%, on the grounds that a morale boost can often free them up to resume progressing normally.

If students wish to move down a level, the Head teacher will discuss this with the teachers concerned and if there is room and the teachers are in agreement, the change will normally be approved. Students who wish to go up a level will normally be asked to wait till the next Progress Test, but if the student is particularly strong, a move may be permitted.

Pastoral Care



Talent International Institute is committed to providing you with a high degree of Pastoral Care. We are here to help you with any of your problems, whether it is difficulty within the institute, difficulty with your living arrangements or difficulty fitting into your new cultural surroundings. Please don't hesitate to ask for help at any time.

Students' safety and comfort is of great importance to us.

Talent International Institute has agreed to be bound by the Code of Practice for the Pastoral Care of International Students. This code ensures that high professional standards are maintained in the institute, that the institute behaves ethically and responsibly, that the institute provides complete and up-to-date information to the students, that the needs of international students are recognised and addressed, and that procedures are in place for resolving student grievances. The Code of Practice protects your rights as an international student and you are encouraged to read and understand those rights. A summary of the Code of Practice in English is provided in Appendix A of this Handbook.

Talent International Institute has a copy of the complete Code of Practice available for students to read in English. We also have summaries of the Code available in simplified Chinese, traditional Chinese, Japanese, Korean and Thai. Please ask the Administration and Student Services Manager for a copy. A full copy of the Code in your own language can also be accessed on the web at www.nzqa.govt.nz/providers-partners/education-code-of-practice/code-of-practice-resources-languages/

Teachers and Head Teacher

Students having questions or problems directly related with their course of study should consult with their Teachers about strategies for solving the problems. They can speak to the head teacher about problems with their class or other issues that their teacher can't help with.

Administration and Student Services Manager

The Administration and Student Services Manager are there for students to discuss problems of homesickness, settling into Christchurch life, cultural questions on how to fit into New Zealand lifestyle, culture shock, and planning for future job or academic training. They can also help with other problems within the school.

Fee Protection Policy



Public
Trust

Talent International Institute has established a Student Fees Protection Trust Fund held by the Public Trust. All fees paid by students are protected from any wrongdoing by, or insolvency of, the Institute. Talent International Institute agrees to comply with Section 253 of the Education Act 1989 and the Student Fee Protection Rules 2013 with regard to the protection of student fees:

1. All student fees \$500 or less (GST Inclusive) are required to be deposited in the business account of Talent International Institute.
2. All student fees more than \$500 (GST Inclusive) are required to be deposited in the Student Fees Trust Account of the Institute in advance. Fees are drawn down after commencement in stages as the course is completed.
3. Funds held in this trust account can only be released after the student has been at the Institute for:
 - A. 5 calendar days for all courses under 13 weeks and after the Trustee has given his/her permission for the funds to be so released.
 - B. 8 calendar days for domestic students on courses of 13 weeks or more.
 - C. 10 working days for international students on courses of 13 weeks or more, and after the Trustee has given his/her permission for the funds to be so released.
4. The Student will pay their fees into the Public Trust account and authorises the Trustee to administer the Student Fee and any accumulated interest according to the Trust's provisions and terms and in accordance with the payment schedule produced by the Institute. The student should also understand that after signing this document this authorisation cannot be revoked.

Please visit the Public Trust website for more information:

Public Trust
www.publictrust.co.nz

Phone: 0800 494 733
E-mail: feeprotect@publictrust.co.nz
Address: PO Box 31543 Lower Hutt

Student Visa Information

A Student Visa is required to allow an international student to enter New Zealand and study full time. Most student visas are multiple entry, which allows the student to travel in and out of the country several times before the visa expires.

A Student Visa allows the student to stay in New Zealand and study and states the expiry date and conditions of the visa. These conditions will include details about:

- The student's course of study
- The educational provider and location in NZ
- Any restrictions (such as not being allowed to work)

A Student Visa is usually granted upon entry to New Zealand. If you are already in New Zealand at the time of your placement into Talent International Institute or if you wish to extend your Student Visa, you must apply to Immigration services.

Remember, students on a Student Visa must have a 100% attendance level.

The Administration and Student Services Manager will tell you if your attendance is dropping below the required level.

If you withdraw from your course of study, Talent International Institute is required to advise New Zealand Immigration immediately of your change in status. This may result in your student permit being revoked.

For more information on the procedures for studying in New Zealand, see the Guide for Studying in New Zealand available from

<https://www.immigration.govt.nz/new-zealand-visas/options/study>

When you have completed your visa application, you can send it to:
Immigration New Zealand

PO Box 22 111
Christchurch 8142

Phone Immigration New Zealand on
0508 55 88 55

The Administration and Student Services Manager will help you with your Visa applications at any time.

Health & Travel Insurance

You must have Health and Travel Insurance to study at Talent International Institute. We can help you arrange it if necessary.

If you have arranged your own insurance, you will need to provide the school office with a copy (in English) on your first day of school. "Appropriate health coverage" as defined by the New Zealand Code of Practice and Pastoral Care for International Students, is coverage that includes the following:

--Medical expenses incurred for the treatment of illness and/or injury (in excess of ACC cover) that requires surgery and/or hospitalisation - unlimited sum insurance recommended

--Medical evacuation related to serious illness and injuries - unlimited sum insurance recommended

--Emergency dental treatment

--Costs for family members' travel in the event that the student suffers a serious illness or injury

Emergency Contact

In an emergency, contact (Sharon Sun) on **022 199 4661** or (Yasser) on **021 084 63423** in the first instance in Christchurch, or (John) on **027 534 3837** in Dunedin.

In an Emergency

Please be aware of the following:

- The sound of continuous alarm bells is the signal that there is a fire in the building.
- Ring 111
- If you discover a fire, warn others immediately and leave the building immediately by your designated exit which is THE FIRE STAIRCASE
- DO NOT use the lift in the event of a fire
- Assemble on the Oxford Terrace and Montreal Street corner
- Do not linger in rooms or passageways
- Do not return to your room until the 'all clear' is given
- Do not run



School Holiday Programme

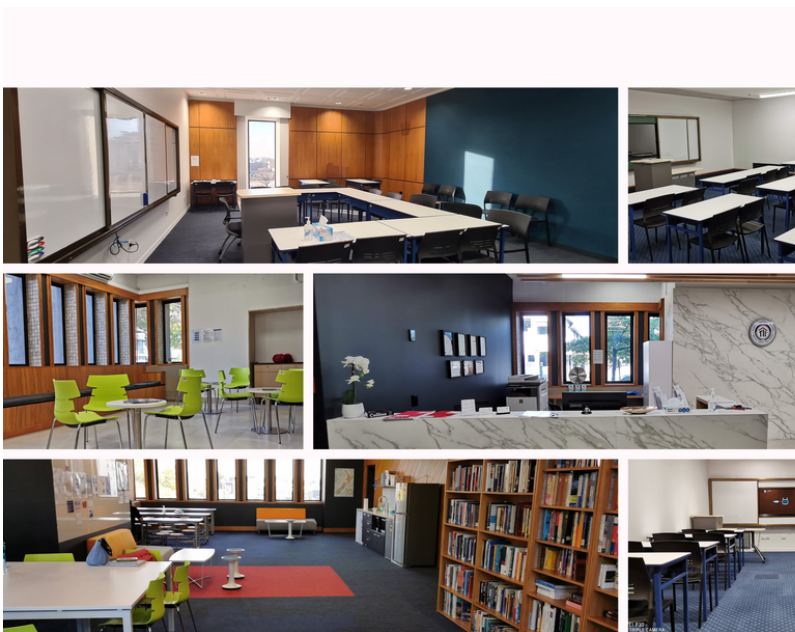
TII delivers high-quality, fun extended holiday programmes which enable students to study skills, team building and do activities such as creative painting, Robot Science, LEGO building, rock climbing, model yachting, city tours to the museum, art gallery and parks.

The TII holiday programmes are outcomes-focused. Offering a learner opportunities to

- Advance their life skill base
- Broaden their interests
- Cultivate their self-confidence
- Develop a wider network of cohorts

Centrally located in the iconic Christchurch landmark building at **282 Durham Street Christchurch City** and **Central Dunedin City** for the ease and convenience of facility users.

For more information, please visit www.tiixperience.com



School Holiday Options



Blended School Holiday Programme Christchurch Campus

If you are looking for a school holiday programme that will excite, engage and entertain your child. Our educational activity-based programme is ideal.

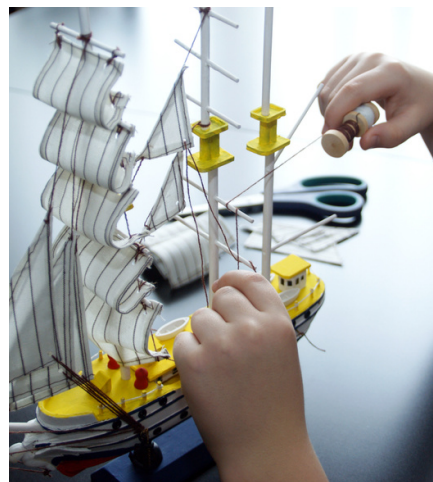


ESOL School Holiday Programme Christchurch & Dunedin Campus

Our ESOL Holiday Programme is for high school students requiring a study abroad experience that involves a strong balance of English language tuition and activities.

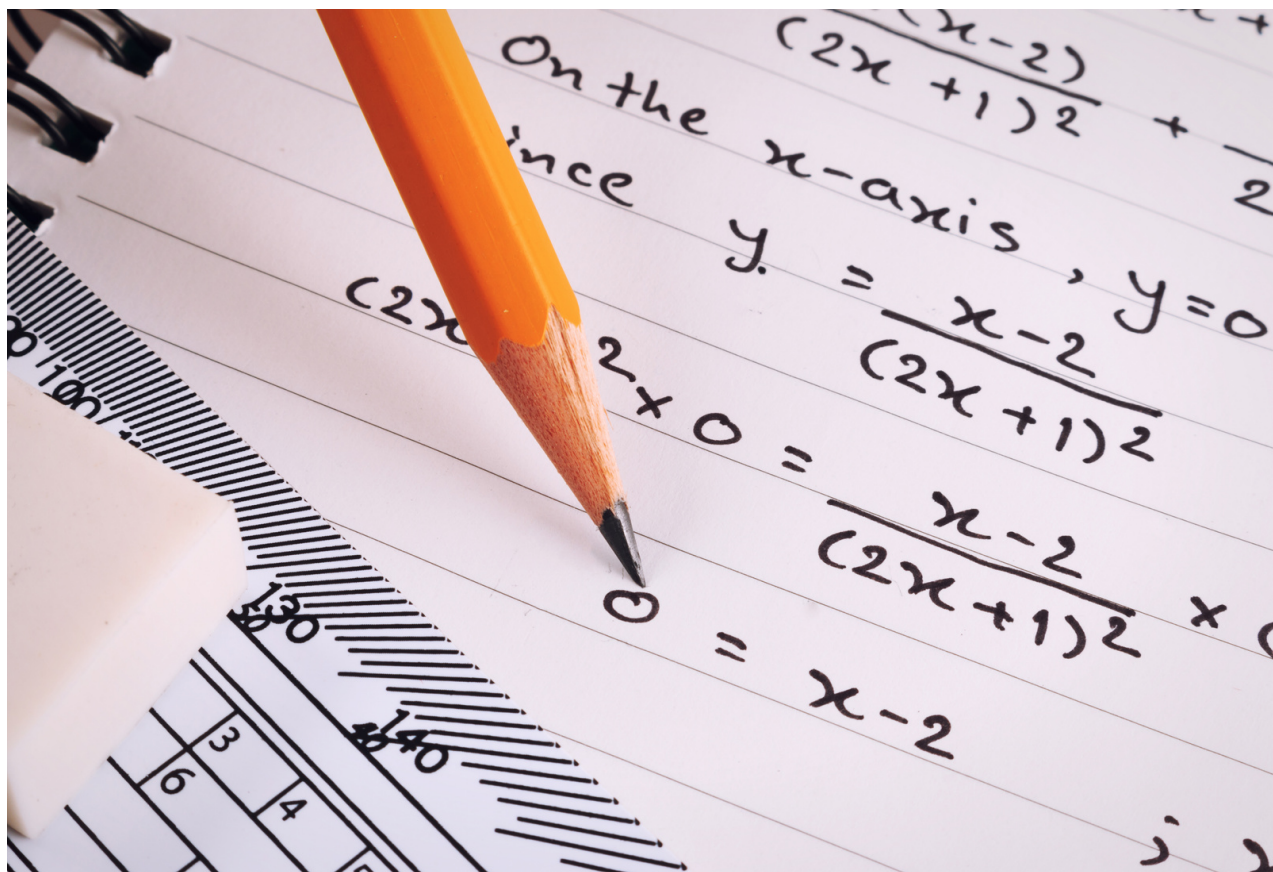
ACTIVITY

HIGHLIGHTS



Afterschool Programme

Mathematics



A sound understanding of mathematics helps support and provide a pathway to the study of subjects like physics, chemistry, engineering, IT, economics, business and biology. All key vocations in today's competitive and rapidly changing employment market.

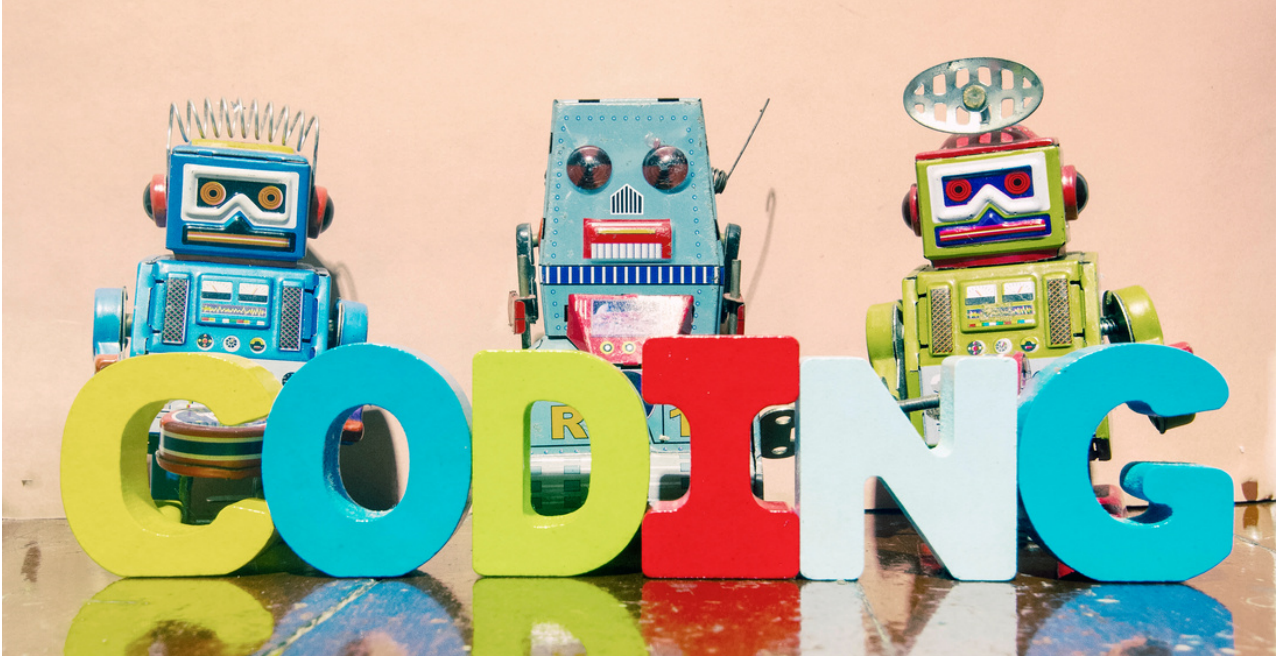
TII provide after-school programme - teaching mathematics for high school students from year 9 to year 13, and also provide targeted training for maths competition /scholarship.

For more information, please visit www.tiixperience.com.



Afterschool Programme

Programming



Students use a programming platform (Scratch) that encourages beginners to have a solid grounding in how to programme without the possibility and fear of syntax errors. With Scratch, learners can programme their own interactive stories, games, and animations — and share their creations with others in the online community. Scratch helps young people learn to think creatively, reason systematically, and work collaboratively — essential skills for life in the 21st century.

This programme is ideal for learners from 7 to 15 years old.

For more information, please visit www.tiexperience.com.





Business Chinese Programme

Outcomes Focused

After 10 weeks

- Learners will be able to conduct beginner-level conversations in Chinese, e.g. greetings, finding directions, doing basic transactions and counting.
- Learners will be able to pronounce Chinese words in Pinyin format & understand beginner-level Chinese grammar.
- Learners will be able to recognise some of the most commonly used Chinese characters in the business settings.
- It equips learners with courtesy in Chinese business culture background knowledge.

Intake date: The first Monday each month

Timetable: Every Wednesday (1.5 hours after work)

Small Classes: Maximum 10 learners each class

Location: Ideal Christchurch city central (Old law court building)

For more information, please visit www.tiixperience.com

Living in New Zealand

New Zealand has a bicultural heritage which is based on its founding document the Treaty of Waitangi (Te Tiriti O Waitangi). The Maori are the indigenous people of New Zealand and are known as the Tangata Whenua (People of the Land). Both Kiwi and Maori cultures are important to New Zealand identity and the Maori language (Te Reo) is recognized as an official language of New Zealand.

Christchurch, the South Island's largest urban centre, is characterised by its English heritage. The picturesque city also serves as a gateway to fun-filled southern adventures, with an international airport and short drive to the sparkling Pacific Ocean, or the majestic Southern Alps.

The Christchurch delivery site, by the side of the Avon River which runs through the city, is right in the CBD area. It is within walking distance to the Christchurch library, Bus Interchange, a large shopping complex and supermarkets, movie theatres, restaurants, cafes and other conveniences.

Students are encouraged to explore their new environment in every way.

To find out more about Christchurch and Canterbury, we recommend these websites:

<https://www.christchurchnz.com/>

<https://findchch.com/>

<https://www.eventfinda.co.nz/whatson/events/new-zealand>



Living in New Zealand

Dunedin is a city located on the eastern coast of the South Island of New Zealand. It has a population of about 123,000 (Student population of 25,000). Because of the many institutes located in Dunedin, it is very student friendly. Dunedin has many lovely parks and a large botanical garden.

In Dunedin you can enjoy the theatre, restaurants and cafes, lovely architecture, sporting events and many outdoor activities, such as hiking, kayaking, horse riding and biking. The Otago Peninsula is within easy reach, where you can see the wildlife of Otago. Dunedin is the home of many international students who attend language institutes, Otago Polytechnic or University of Otago and is becoming increasingly multicultural. Talent International Institute is also a very multicultural institute. You will meet people from all around the world. Remember to respect everybody's culture and take this opportunity to learn about countries from all around the world.

Weather

The weather in Dunedin and Christchurch ranges from about 28°C in the summer to -1°C in the winter. The weather is very changeable, and Dunedin enjoys all four seasons. Students should plan to dress warmly in the winter. You will need a good warm waterproof jacket, woollen jerseys, woollen hat and gloves, Jeans, thermal underwear such as leggings and singlet, warm woollen socks, sturdy boots or shoes, track pants and gym shoes.

Seasons

Spring	September to November
Summer	December to February
Autumn	March to May
Winter	June to August

Study in New Zealand

<https://www.newzealandnow.govt.nz/studying-in-nz>

<https://www.studyinnewzealand.govt.nz/blog/>



Accommodation

Homestay

This is an excellent way to experience New Zealand culture. If you decide to Homestay, you will live with a New Zealand family, who will help you introduce you to New Zealand and Dunedin. They will provide a furnished room, food and laundry as well as lots of information about your new surroundings. Talent International Institute is happy to set up a Homestay for you. All of our Homestay families speak English as a first language, and it can be a wonderful way to improve your English.



The costs for Homestay accommodation are as follows:

Christchurch Branch	Dunedin Branch
Estimated Placement Fee: \$150 (paid once)	Estimated Placement Fee: \$150(paid once)
Estimated Weekly Fee: \$300	Estimated Weekly Fee: \$335
Halal Food: Extra \$25	Halal Food: Extra \$25
Airport Pick up: \$50	Airport Pick up: \$50
Second time of changing accommodation fee: \$100	Second time of changing accommodation fee: \$100

Flatting

If you choose to flat there are several decisions you must make. You must establish a budget for yourself including rent, utilities, food and any extras. You must decide whether you wish to flat by yourself or with other people. If you choose to flat with other people, make sure that you establish the rules of the flat beforehand. This can include rules regarding cooking, food purchasing, cleaning, how to pay utilities, pets and smoking. If you are entering a flat that is already occupied by a number of students, make sure that you know the rules that they have established and that you are prepared to abide by them.

Flats are sometimes furnished and sometimes unfurnished. Make sure you find the right one for your needs. NEW ZEALAND is a student-friendly city and there are many flats in and around the city. The cost of flatting can vary greatly from about \$110/week (for a room in a house) to \$300/week (for a house-usually split among several friends). Additionally, you normally need to pay several weeks rent in advance and also a security bond (which is normally returned to you at the end of your tenancy). It is important to remember that these fees only include the flat or room. They do not include electricity, phone, food, or laundry. You will have to budget separately for those. If you decide to flat, pick up a brochure from Talent International Institute about Tenancy Services. It will inform you of your rights and responsibilities when you flat. Tenancy Services can also act as a mediator between you and a landlord.

Belleknowes Lodge is a great alternative to living with a homestay if you are looking for more independence. There are communal facilities available for all tenants, including kitchen, dining and lounge facilities with Plasma TVs, bathroom, laundry and a games room with table tennis facilities. Rooms single to king-size fully furnished (some with en suites).

The weekly price includes power, unlimited WiFi and water. Please go to their website for further details.

<http://www.belleknoweslodge.co.nz/>

Accommodation

Short Term Accommodation

If you need a place to stay when you first arrive in New Zealand, while you look for a flat,

please go to the following link:
<https://www.hostelworld.com/>

for list of some inexpensive, short term accommodation options near the city centre.



Banking

If you will be in New Zealand for longer than three months, it is recommended that you open a New Zealand bank account. Most bank accounts will provide you with a cash card (EFTPOS) which will allow you to withdraw funds from an ATM machine and make purchases at local stores. If you choose to open a bank account in New Zealand, there are five major banks in Dunedin. Many of them provide student accounts, or more specifically, international student accounts:

Bank of New Zealand (BNZ)

120 Hereford Street
03-379 6280

ANZ

127 Cashel Street
0800 269 269

Westpac

83 Cashel Street
0800 400 600

ASB

150 Cashel Street
03-379 9672

The Student Services Coordinator will help you open a student bank account, therefore you will not have to pay any bank fees as you will have a student account.

Transport

Most students use the public transport system. The 'Metro' bus system is relatively cheap. Most buses leave from the Bus Interchange in Lichfield Street. You are advised to get a Metrocard as it is much cheaper and easy to use. There are free bus timetables and bus information available from reception, the Bus Interchange or at www.metroinfo.org.nz. ID with your date of Birth, [Passport] is required when you purchase a new Metrocard. The cost of a Metrocard is \$10.00 and loading a minimum of \$10 onto the Metrocard will activate it. After that, you can top-up your card with a minimum of \$10.



Driving

We would recommend that you wait for a few weeks before attempting to drive in New Zealand in order to accustom yourself to the traffic patterns. It is also recommended that you get a copy of the Road Code. This will help you to learn about safe driving laws and practices in New Zealand. You can find these at local bookstores, driver licensing agents, or at the Public Libraries. You can also view information in different languages on the following links:

- Driving in New Zealand
<https://www.nzta.govt.nz/assets/resources/driving-in-nz/docs/driving-in-nz.pdf>
- Driver training video
<https://www.aa.co.nz/travel/rental-vehicles-and-transport/visitors-to-new-zealand/visiting-driver-training-programme/>

If you have an overseas driver licence or an international driving permit, you may drive in New Zealand for one year after your arrival in New Zealand. After one year, you will have to take a theory test and possibly a driving test. These tests can be arranged at the Automobile Association (AA) which is located at 126 Riccarton Rd, (964-5530) Christchurch and 450 Moray Place (03-4775945), Dunedin.



Cell Phones

To be able to use your cell phone in NZ you will need to purchase a sim card from one of the following providers. The most common package that includes data, text and calling minutes starts at \$19 a month. Contact Spark/ www.spark.co.nz or call 123, Vodafone www.vodafone.co.nz or call 0800 438 458 or 2degrees / www.2degreesmobile.co.nz or call 0800 022 022.

You can top up your cell phone online or you can buy a top up voucher from any supermarket.

You can pay your power or phone accounts at any NZ Post Shop. Visit www.nzpost.co.nz/tools/postshop-kiwibank-locator/Christchurch to find your nearest Post shop.



Shopping

Supermarkets:

- New World: 175 Durham Street South, Christchurch Central City
- Countdown: Corner of Moorhouse Ave & Madras Street, Christchurch Central City
- Pak 'n Save: 297 Moorhouse Avenue, Sydenham, Christchurch Central City

Christchurch Farmers Market: Open every Saturday Morning, from 9 am to 13:00pm at 16 Kahu Road, Fendalton, Christchurch. Offers the freshest and best of Canterbury's wonderful fruit, vegetables, meats, fish, eggs, cheese and many other delicious, healthy foods.

Household Supplies:

- The Warehouse: 265 Blenheim Road, Riccarton, Christchurch
- K-Mart: 129 Riccarton Road, Riccarton, Christchurch
- Farmers: 7/220 Moorhouse Avenue, Sydenham, Christchurch

Electricity costs can vary from as little as \$50/month to as much NZ\$300/month. To set up your electricity, contact Contact Energy on 0800-80-9000, TrustPower on 0800-87-8787, Meridian 0800 49 6496.



Fun and Recreation

Christchurch i-SITE Visitor Centre:

Located at 28 Worcester Boulevard, Christchurch Central City, Christchurch i-Site has all kinds of information about the various tourist attractions in Canterbury. They offer information on everything from pleasant walks you can do by yourself or with a friend to formal tours of Canterbury and the Rest of New Zealand. They also have maps of the area and local bus schedules.

Tramping is a very popular outdoor activity in New Zealand. If you choose to go tramping during your stay in New Zealand, please keep the following precautions in mind. The weather here is extremely variable. Make sure you are suitably prepared for any weather, even if it looks like a nice day.

Let someone know where you are going and when you expect to be back, and inform them of any changes along the way. New Zealanders take this type of responsibility very seriously, so make sure you let them know that you have returned safely.



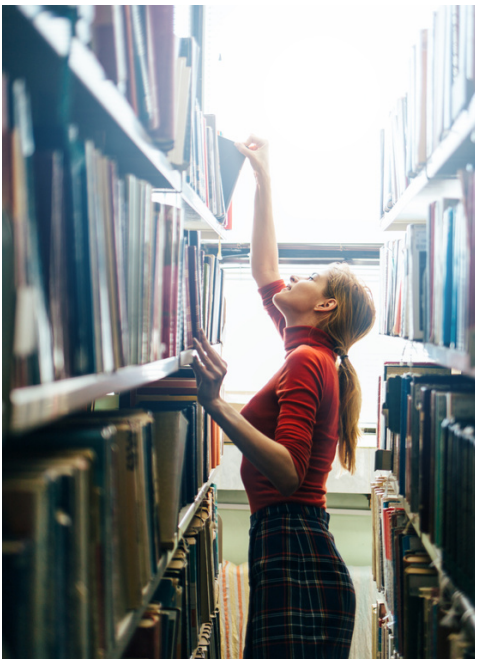


Library

Christchurch has several libraries you can access. The Christchurch Public Library has its main branch near Talent International Institute on 60 Cathedral Square, Christchurch Central City. You can get a library card if you have a residence in Christchurch. Library Membership is free. If you have a Christchurch Public library card, you can borrow from any of its other branches:

- Christchurch Library
- South Christchurch Library
- Fendalton Library
- Papanui Library
- Shirley Library
- Linwood Library at Eastgate
- Bishopdale Library

We will assist you with your Library membership.





Next Steps



Apply

Email info@tii.ac.nz or Visit www.tii.ac.nz (academic) www.tiixperience.com (non-academic) download and complete your application form. Then send it back to us.



Processing

You will be contacted within 48 hours of submitting your application.

Some students may be invited to come in and meet with one of our academic staff to talk through their application as part of the application process.

If you need to provide any additional documents, you can email these to us at info@tii.ac.nz.



Accept

Your offer of place will be sent via email - please ensure you check your inbox for this.

Note: your offer might be conditional on you passing exams or providing us with extra information - we'll keep in touch and let you know.



Prepare

We'll let you know more when you accept your offer. You will receive a student orientation package before your first day at TII.



Christchurch Campus:
282 Durham Street, North Central City, 8013
Phone: 64-3366-0797

Dunedin Campus:
95 Hanover Street, 9016
Phone: 64-3477-3345



<https://www.tiexperience.com>
<https://www.tii.co.nz>



info@tii.ac.nz or holidayprogramme@tii.ac.nz



Talent International Institute
TII School Holiday Programme

